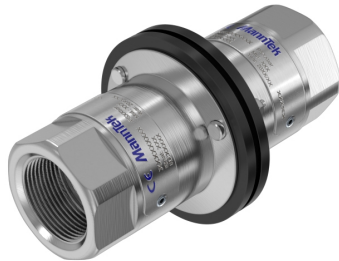


## Configurator MannTek Products

Part Number: ND106D4401



[http://configurator.manntek.se/SBC/INDUSTRIAL/1/SS/THREAD/F\\_1\\_14\\_NPT\\_A/THREAD/F\\_1\\_14\\_NPT\\_A/VITON/INTEGRATEDSWIVEL/Product11.html](http://configurator.manntek.se/SBC/INDUSTRIAL/1/SS/THREAD/F_1_14_NPT_A/THREAD/F_1_14_NPT_A/VITON/INTEGRATEDSWIVEL/Product11.html)

### Product Group

#### Safety Breakaway Couplings

SBC

Safety Breakaway Couplings with integrated shut-off valves to protect hose assemblies and loading arms against excessive loads. Suitable for all common liquid and gaseous media.



### Type of Coupling

#### SBC Breaking Bolt Type 'Industrial Version'

Safety Breakaway Coupling with integrated shut-off valves. Used to protect hose assemblies and loading arms against excessive loads, e.g. due to drive / pull away incidents or rapid removal of the mobile tanker in emergency situations.



Designed with breaking bolts; activation at a defined tensile (pulling) force on the transfer line being applied at an angle of up to 90 degrees.

Suitable for a wide range of products including petroleum based products, chemicals and foodstuffs.

Typical applications include container discharge, fuel bunkering truck-to-ship, ship-to-ship, terminal-to-ship, loading / unloading of tank trucks, rail tankers and ships.

Safety Breakaway Couplings eliminate spillage and damage associated with drive and / or pull away incidents when loading and unloading.

If the transfer line is subjected to inadvertent and strong tensile loads, e.g. due to a premature movement of road and rail tankers or the drifting of ships, the coupling will separate and instantly seal the two open ends.

It can be reassembled on site with a set of spare parts.

Drive and / or pull away incidents occur more often than operators might think.

Increasing passive safety by using SBC avoids not only serious damages to the environment (e.g. fuel spillage), loading equipment and operators.

SBC will also lead to a reduction of down time and other related cost savings, such as the possibility to reduce insurance fees.

Certificate: SBC fulfill the requirements of European Pressure Equipment Directive category 2 (for higher demand on request).

Suitable for the use in potentially explosive atmosphere (ATEX) zone 1.

Approved for the transport of dangerous goods on road (ADR), by rail (RID) and by ship (IMDG).

TÜV TÜ.AGG 437-11, Lloyd's Register 0038  
RET0271208, TDT-UW-21/16, EAC TC No. RU Д-SE.MIO62.B.02151

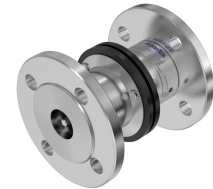
Type Approvals

Nominal Diameter

**DN 25 (1")**

For industrial process plant, road and rail tankers, IBC containers, Pharmaceutical and Petrochemical industries etc.

Connections: ¾", 1" and 1¼" in BSP, NPT and Flanged inlet



Body Material

**Stainless Steel 1.4408 (AISI 316) (Standard)**

Connection 1

**Threaded Connection**



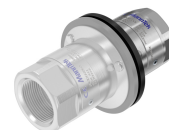
Connection 1 - Detail

**F 1¼" NPT**

1¼" NPT female to ANSI B1.20.1

Connection 2

**Other Threaded Connection**



## Connection 2 - Detail

### O-Rings

**F 1¼" NPT**

### **Viton® (FPM/FKM) Standard**

FKM/FPM (Fluorocarbon Rubber): FKM is known especially for its non-flammability, low gas permeability and excellent resistance to ozone, weathering and aging.

The operating temperatures of the Fluorocarbon Rubber range between -20°C and +200°C ).

FKM is often used with mineral based oils and greases at high temperatures, aliphatic, aromatic and chlorinated hydrocarbons and oxidizing acids.

### Options: Special Types

### **With integrated Swivel**

The swivel helps to avoid torsion of the hose assembly and thus to extend hose life. More compact, lightweight and economic than the combination of separate swivel and coupling.



## **Contact Data:**

Mann Teknik AB  
Strandvägen 16  
SE-542 31 Mariestad / Sweden  
Telefon:+46 501 39 32 00  
Telefax: +46 501 39 32 09  
E-Mail: sales@manntek.se